

Dug Wells

Dug wells are still widely used in certain sections of West Virginia where it is essential to provide storage space for water to accumulate between pumpings.

From the public health viewpoint, the dug well is the least satisfactory type of well. It should not be used where water may be obtained from a drilled or driven well. Actually, dug wells:

Cost more to build and maintain in good condition.

Are limited to relatively shallow sources.

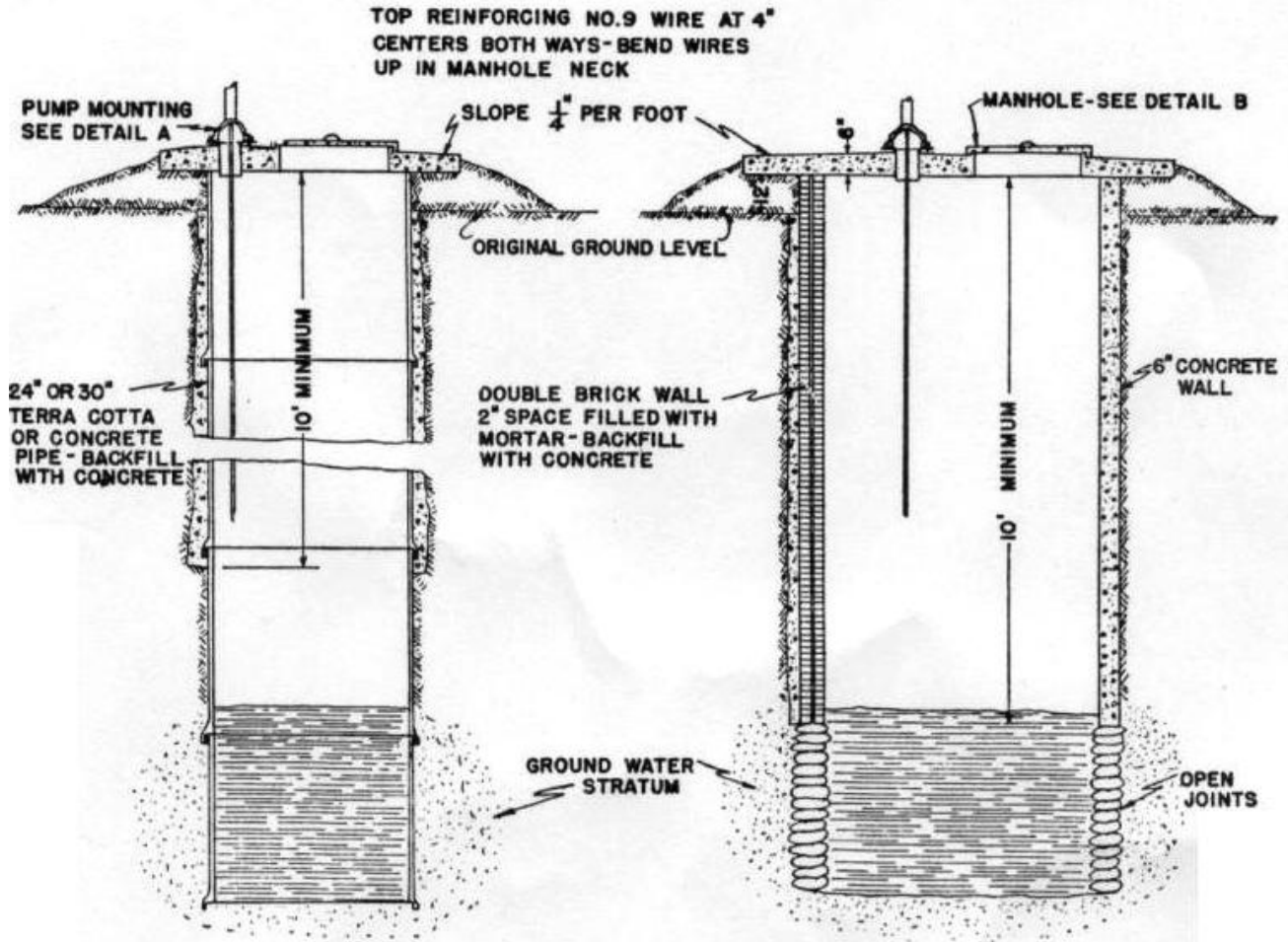
Vary seasonally in yield of water.

Often provide an inadequate yield of water.

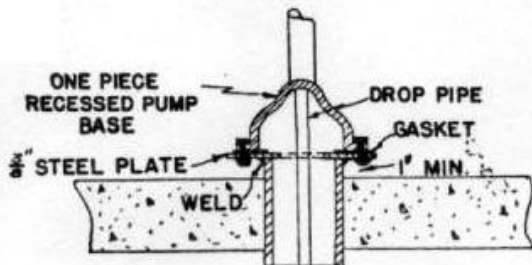
There are many critical problems involved in constructing or repairing a dug well. To assure a reasonably safe water supply, be sure to (see sketch):

- (1) Provide for exclusion of surface water by proper wall construction, using a concrete, tile, or double brick wall at least ten feet down from the ground level.
- (2) Construct the manhole cover so that any water spilled on the well platform cannot run back into the well.
- (3) Install a suitable pump, of non-priming nature, and never use the rope and bucket system for drawing water.
- (4) Use a concrete cover over the well, with the curbing carried twelve inches above original ground level, and provide a suitable drain to carry away the waste water.

PROPERLY CONSTRUCTED DUG WELL

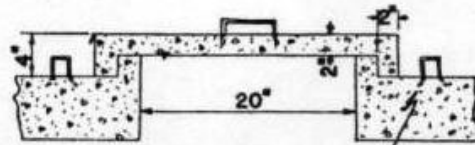


DETAIL A



SECTION OF CASING CAST IN TOP

DETAIL B



MANHOLE COVER REINFORCING-NO.9 WIRE AT 4" CENTERS BOTH WAYS

U BOLTS CAST IN CONCRETE FOR LOCKING COVER